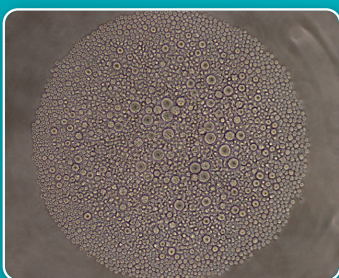


# HemEx<sup>®</sup>-TypeH

Human HSC expansion basal medium

\*Requires the addition of chemically synthesized agonists, etc.



- Specially designed for human HSC.
- Confirmed the proliferation of human HSPC.
- Supervised by Professor Satoshi Yamazaki.

Human HSC expansion basal medium

# HemEx<sup>®</sup>-TypeH \*Requires the addition of chemically synthesized agonists, etc.

- HemEx-TypeH is optimized for expansion of human HSC.
- This product developed by Dr. Yamazaki is manufactured with strict quality control in CSTI.
- For information on obtaining Butyzamide, a chemically synthesized agonist to be added, please contact Celaid Therapeutics Inc. (contact@celaidtx.com)
- It is necessary to add L-glutamine at a concentration of 4mM.



## Human HSCs expansion after 10 days in culture

Fig.1 Number of cells

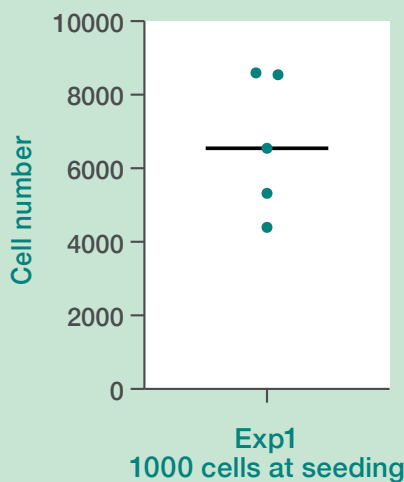
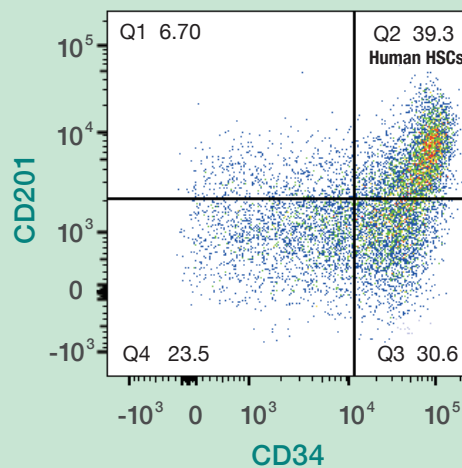


Fig.2 An example flow cytometry plot displaying human HSC



Code (CSTI / NIPRO)	Product Name	Description	Volume
A2D10P01C / 87-079	HemEx-TypeH	Human HSC basal medium	100mL (P)
Supplement			
Code (CSTI / NIPRO)	Product Name	Description	Volume
1104 / 87-885	200mM L-Glutamine solution	200mM L-Glutamine solution	100mL (P)

(P) PET bottle

※ For Research use only.



1-16-16 Seikaen, Aoba-ku, Sendai, 982-0262, Japan

URL: <http://www.cstimedia.com>  
E-mail: [csti-info@ml.nipro.co.jp](mailto:csti-info@ml.nipro.co.jp)



**NIPRO CORPORATION**  
3-26, Senriokashinmachi, Settsu, Osaka, 566-8510, Japan

